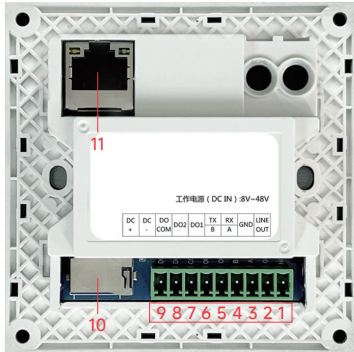


Interface Introduction



Serial Number	Description	Remarks
1	LINE OUT	Audio Output
2	GND	
3	RS485A/RS232 RXD	For RS485 or RS232 devices: /dev/tty51
4	RS485B/RS232 TXD	
5	DO1	Relay 1
6	DO2	Relay 2
7	DOCOM	Relay Common Terminal
8	DCIN -	12V Input (8 - 48V)
9	DCIN +	
10	TF Port	Used for connecting and reading SD cards, for software installation
11	LAN Port	Use an Ethernet cable to connect to a POE switch, and the POE switch will supply power and transmit data

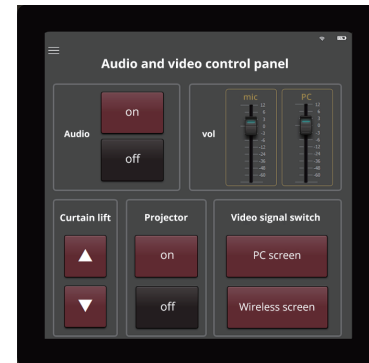
Packing List

Panel	1 piece	9 - pin Phoenix terminal	1 piece
Quick Guide	1 copy	Installation screws	2 pieces



4-inch TFT Touch Screen

Quick Guide

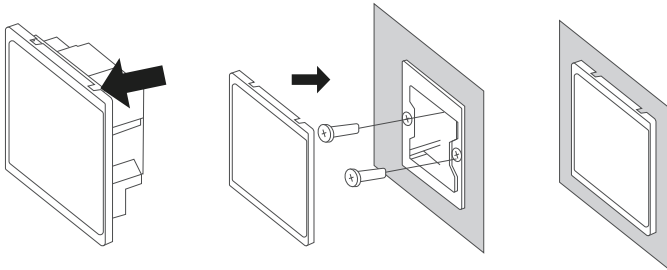


Thank you for choosing to use our company's 4 - inch TFT touch screen. Before using the product, please read this user manual carefully. Due to continuous product upgrades, if there are any changes, no further notice will be given.

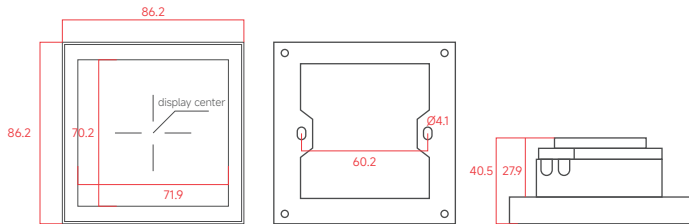
Thank you for choosing our company's 4 - inch TFT touch screen. The following guide will let you quickly understand how to use this product. The content of this guide is applicable to the 4 - inch TFT touch screen series products.

Interface

- 1.Pry open the panel along the gap above the panel.
- 2.Use screws to fix the panel and the bottom box.
- 3.Cover the panel to complete the installation.



Product Dimision Diagram



Unit: mm

The unmarked tolerance is $\pm 0.3\text{mm}$

Panel Parameters

Display	Capacitive 4 - inch TFT touch screen
Resolution	480x480
Operating System	Android 10
Processor	Quad - core ARM Cortex A53 CPU 1.6GHz, 64 - bit
Control Protocol	UDP
Address Setting Method	TCP/P
Signal Line Length	100 meters
Power Supply Method	PoE & + 12VDC
Connection Port	RJ - 45
Power Consumption	< 8W
Color	Gray
Operating Temperature	- 10 - 50°
Cutout Size (WxDxH)	87.2x40.5x87.2mm
Product Size (WxH)	86.2x40.5x 86.2mm
Power Supply	BV - 48V Standard 12V/1A; Network Port POE Power Supply 48V

Common troubleshooting

screen not lit: Please check whether the wire sequence of the network cable or power cable is correct and whether the cable is broken.

Instructions for use

- 1.Use a network cable to connect the panel LAN port and the POE switch.
- 2.Open the APP and synchronize the program of the user interface to the touch screen for use.
- 3.All devices must be on the same network segment. When uploading the program, ensure that the APP is open and the screen is always on.